

Clear Bromine Feeders

Purpose

Neptune Clear Bromine Feeders are a convenient and efficient way to properly feed solid biocide or other corrosive water treatment chemicals. New clear PVC body allows bromine level to be viewed without opening the cap.

These units easily handle ball, stick, tablet and other forms of bromine.

Design Features/Benefits

- Feed rates from 1.4 kg (3 lb) through 7.3 kg (16 lb) per day
- Bottom inlet and drain connection
- Top opening with threaded, O-ring closure
- Max pressure 8.6 bar (125 psi)
- Max temperature 38°C (100°F)
- Optional PVC piping kits include unions, valves and all required fittings
- Optional flow indicator in four ranges
- Pressure relief valve furnished standard set at 8.6 bar (125 psi)
- UV-inhibited

Model CLR-50

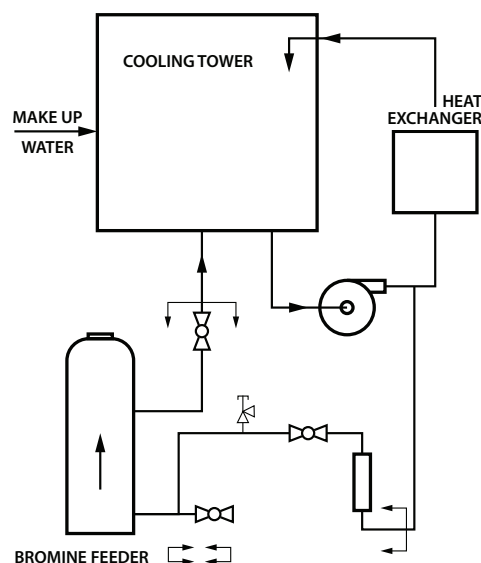
with piping, flow indicator and relief valve.



Calculated Delivery Rates

MODEL	TOTAL CAPACITY kg (lb)	FLOW RANGE lpm (gpm)	OUTLET FEED RATE ¹ kg/day (lb/day)
CLR-25	11.3 (25)	3.8-37.8 (1-10)	2.5-4.8 (5.4-10.6)
CLR-50	22.7 (50)	3.8-37.8 (1-10)	3.6-7.3 (8-16)

¹ Feed rates will be reduced when using less soluble compounds. Feed rates will vary with water temperature.

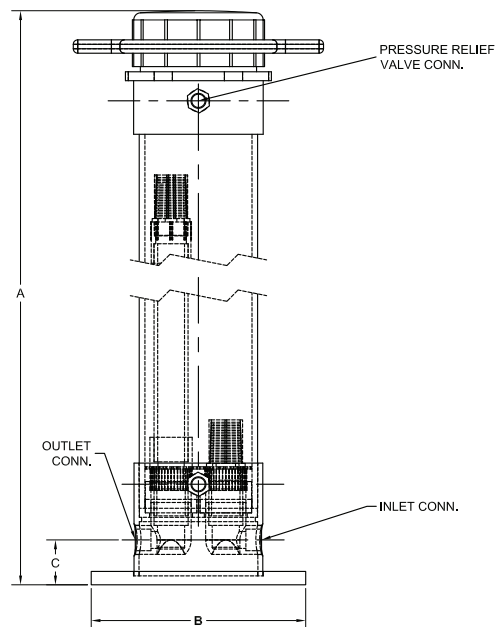


Clear Bromine Feeders

Feeders

Clear PVC bodies have two threaded bottom connections and one 15.2 cm (6 in) top opening with threaded O-ring closure. Feeders are rated to maximum pressure of 8.6 bar (125 psi). Feeders are rated to a maximum temperature of 38°C (100°F).

Model	Capacity			Dimensions cm (in)			Closure cm (in)	Inlet Conn. cm (in)	Outlet Conn. cm (in)
	kg (lb)	cu. m (cu. ft)	L (gal)	A	B	C			
CLR-25	11.3 (25)	0.042 (1.5)	42.4 (11.2)	81.3 (32)	30.5 (12)	14.3 (5-5/8)	15.2 (6)	2.5 (1)	2.5 (1)
CLR-50	127 (50)	7.6 (3)	57.2 (22.5)	142.2 (56)	30.5 (12)	14.3 (5-5/8)	15.2 (6)	2.5 (1)	2.5 (1)



Piping Kits

PVC threaded fittings for operation to 8.3 bar (120 psi) at 38°C (100°F). Kit contains: two unions, three ball valves, two tees, two 90-degree elbows, required nipples and plugs.

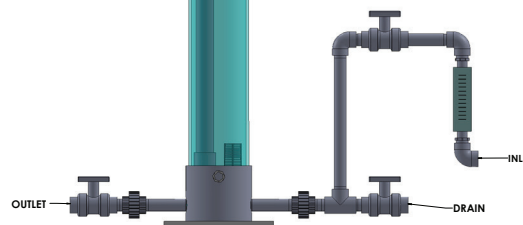
Model	Description	Use With
004923 (CLRP-100)	1" NPT Piping Kit included busings to adapt 1/2" & 3/4" flow indicators	CLR-25 & CLR-50

Clear Bromine Feeder Piping Kit
(CLRP-100) Used on CLR-25 and CLR-50 (CLR-50 Shown)

Flow Indicators

5% accuracy, Polysulfone and CPVC with 316-SS float. Male pipe connections. Rated to 10.3 bar (150 psi) at 49°C (120°F).

Model	Range lpm (gpm)	Connection (NPT)
F1-1	0.38-3.8 (0.1-1)	1/2"
F1-2	0.76-7.6 (0.2-2)	1/2"
F1-5	1.9-18.9 (0.5-5)	1/2"
F1-10	3.8-37.9 (1-10)	3/4"

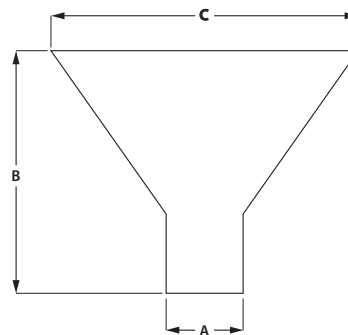


Funnels

Polyethylene funnels are available in two sizes.

Part Number	A	B	C
106807	8.9 cm (3-1/2")	17.8 cm (7")	29.2 cm (11-1/2")
*107898	11.4 cm (4-1/2")	16.5 cm (6-1/2")	32.4 cm (12-3/4")

*Screws onto 18.9-liter (5-gallon) plastic pails.



Distributed by:



295 DeKalb Pike • North Wales, PA 19454 USA
Tel: +1 (215) 699-8700 • Fax: +1 (215) 699-0370
info@neptune1.com www.neptune1.com

Printed in USA © 2013 Neptune NPT-10001-F-01

Neptune reserves the right to modify the information and illustrations contained in this document without prior notice. This is a not-contractual document.